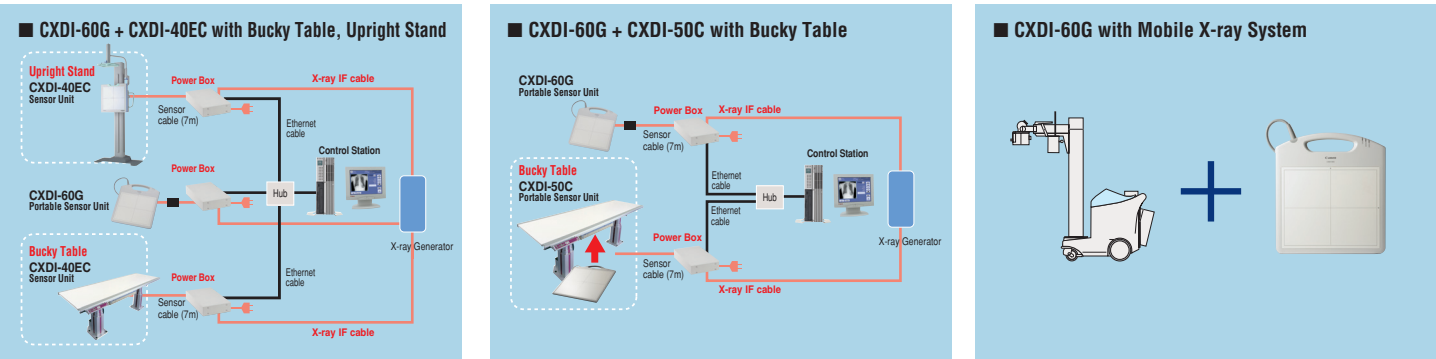


System Configuration Examples



For exact system configuration details, please contact your local authorized Canon representative.

CXDI-60G Specifications

Purpose	General radiography
Method	Flat panel detector: scintillator & amorphous silicon (a-Si)
Sensor	LANMIT (Large Area New-MIS sensor and TFT)
Scintillator	GOS (Gd <sub>2</sub> O <sub>2</sub> S: Tb)
Pixel pitch	160 x 160 microns
Pixels	1,464 x 1,776 pixels (2.6 million pixels)
Image size	Automatic sizing up to 9 x 11 in. (23 x 28 cm)
A/D	14-bit
Grayscale	4,096 grayscale (12-bit)
Preview image access time*	Approx. 3 seconds after X-ray exposure
Interface	DICOM 3.0, Ethernet 100 Base TX
DICOM**	DICOM 3.0 compatible, Print Management Service Class (SCU), Storage Service Class (SCU), and others
Voltage	100-240V (50/60Hz)
Power consumption	170VA
Operating environment	Sensor unit: 41 – 95°F (5 – 35°C), 30 – 75% RH (non-condensing)
Dimensions	Sensor unit (W x L x T): 14 x 15 x 0.9 in. (344 x 380 x 22.5 mm)
Weight	Sensor unit: 5.9 lb. (2.7 kg)
Standard components	Sensor unit, power box, remote switch, x-ray interface cable

\*Actual times may differ due to various factors. \*\*Varies with system configuration.

■ User Options	
Grid	Choice of 10:1, 8:1, 4:1 (110 cm)
Software options	Please contact an authorized Canon dealer.

Specifications are subject to change without notice.  
Names of companies or products appearing in this document are trademarks and/or registered trademarks of their respective owners.



**CANON INC.**  
**MEDICAL EQUIPMENT GROUP**  
30-2, Shimomaruko 3-chome, Ohta-ku, Tokyo 146-8501, Japan  
Telephone: +81-3-3757-8547 Fax: +81-3-5482-3960

**CANON MEDICAL SYSTEMS A division of CANON U.S.A., Inc.**  
15955 Alton Parkway, Irvine, CA 92618-3731, U.S.A.  
Telephone: +1-949-753-4160, toll-free within U.S.A.: 1-800-970-7227  
Fax: +1-949-753-4184  
www.cusa.canon.com/DR

**CANON EUROPA N.V. Medical Systems Division**  
Bovenkerkerweg 59-61, 1185 XB Amstelveen, The Netherlands  
Telephone: +31-(0) 20-545-8926 Fax: +31-(0) 20-545-8220  
www.canon-europe.com/Medical

**CANON SINGAPORE PTE. LTD. Medical Equipment Dept.**  
1 HarbourFront Avenue, #04-01 Keppel Bay Tower, Singapore 098632  
Telephone: +65-6796-3549 Fax: +65-6271-4226  
www.canon-asia.com

**CANON (CHINA) CO, LTD. Medical System Division**  
15F Jinbao Building No.89 Jinbao Street, Dongcheng District,  
Beijing 100005, China  
Telephone: +86-10-8513-9999 Fax: +86-10-8513-9914  
www.canon.com.cn

**CANON AUSTRALIA PTY. LTD. Optical Division**  
1 Thomas Holt Drive, North Ryde, Sydney, NSW 2113, Australia  
Telephone: +61-2-9805-2000 Fax: +61-2-9805-2444



Digital Radiography System  
**CXDI-60G**  
Ultra-Portable Flat Panel Detector

FLEXIBLE, PORTABLE FREEDOM  
IN THE X-RAY ROOM AND BEYOND

The lightweight, ultra-compact, and robust CXDI-60G brings high quality digital radiography to a wider range of applications than ever before, in a new size ideal for tabletop exams.

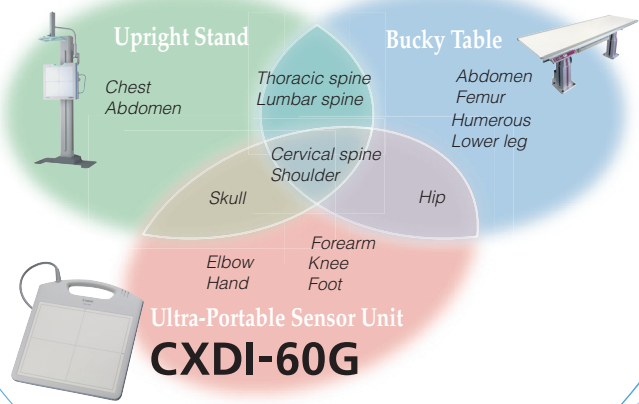




# A Fully Digital Rad Department is Now Within Reach

The CXDI-60G—Canon’s latest innovation in its award-winning CXDI series—delivers unmatched digital image quality and portability in a new convenient size that will expand the capabilities of your rad department. The compact unit offers easy handling and immediate imaging for a wide range of diagnostic exams and critical care settings, and is the ideal size for orthopedic departments, mobile X-ray systems, and more.

### Exams covered by Canon DR



### DR in a new convenient size

Canon extends the range of exams that can be completed using DR technology with the new, ultra-portable CXDI-60G. It comfortably accommodates exams of the extremities, skull, cervical spine, shoulder, and hip, and is highly effective for orthopedics and neonatal care. The compact design makes it a practical solution for applications that are difficult to perform with fixed devices, and offers true portability and versatility for use at diverse patient locations. It’s as easy to position as a CR imaging plate, letting you capture images from virtually any position and angle, while providing the efficiency and accuracy of an all-digital workflow.



Image sizes up to 9 x 11 in. (23 x 28 cm)

### Offering true portability and flexibility

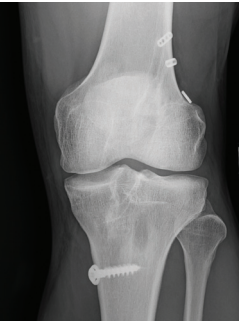
Weighing only 5.9 lbs. (2.7 kg) and less than an inch thick (22.5 mm), the ultra-portable CXDI-60G offers easy handling for diverse applications, plus a patient-friendly design. The ergonomic unit features rounded edges that allow it to easily slide under patients for easy bedside or wheelchair exams, and a compact form that fits right into neonatal incubator trays. And it’s robust, durable, and water-resistant, with a detachable sensor cable that makes maintenance and installation easy.



### Unmatched Canon image quality

The CXDI-60G builds upon Canon’s strong still image processing heritage and over 10 years of medical imaging expertise to provide superior diagnostic image quality. The unit features a 160-micron Amorphous Silicon (a-Si) flat panel with advanced Canon noise reduction processing to deliver clear, high-resolution diagnostic images that are optimally calibrated for view on LCD monitors. Multiobjective frequency processing combined with an expansive 10<sup>4</sup> dynamic range provide optimal image contrast and ensure visibility of subtle detail.

Images are displayed in 12-bit grayscale (4,096 gradations)



### Flexible solutions for full DR

An all-digital radiology department provides significant advantages in image resolution and speed compared with film- and cassette-based systems. With DR technology, X-ray images are displayed on the workstation monitor in just moments after capture, so the technologist knows immediately whether correct positioning has been achieved. Images are then sent directly into a PACS for immediate transfer to printers and other viewing workstations. The superior speed and workflow efficiency of DR means less wait time for patients and higher patient throughput with less burden on staff.

Canon’s all-digital CXDI solutions are available for digital upgrades and brand new installations, and offer support for off-site diagnosis, room-to-room installations, mobile X-ray systems, and more.

